



# GAMEDAY SELECT

- Select Custom UA Team Uniforms
- Set jersey and pant pricing

## GAMEDAY SELECT PROGRAM DETAILS

- Numbers: 8" Front, 10" Back, 3" TV Numbers  
*(3" TV Numbers not available on Diablo or Jet Stream Jersey)*
- Sublimated Tackle Twill (1 or 2 Color; Includes Prints)  
*(Screen print is only available in Jet Stream Jersey)*
- Team Name: 1" Embroidered Team Name – Center Chest  
*(2" Tackle Twill Team Name available on ArmourGrid & CompFit2 styles = +\$20)*
- All UA Fonts Available  
*(Custom Font Team Name = +\$14)*

## UA FOOTBALL PLATFORMS

### ARMOUR GRID

Revolutionary ArmourGrid technology: Durable, lightweight, and virtually impossible to grab

### compfit<sub>2</sub>

The next evolution of the UA CompFit platform: Stronger and lighter than ever

### compfit

4-way stretch materials delivering maximum speed and mobility

### OUTLAW

*(see pg. 8)*

### DECEPTION

*(see pg. 9)*



## GAMEDAY SELECT (page 3)

- Select Custom UA Team Uniforms
- Set jersey and pant pricing



## ARMOURFUSE® (page 21, 30, 36, 46)

- Brilliant, vibrant team colors permanently fused directly into textiles
- Limitless customization, all-inclusive pricing with exclusive UA designs and customized prints



## STOCK (page 14, 34)

- Pre-set designs, ready to ship
- Best-in-class stock fabrications for all levels of play



IGNITE

ARMOUR GRID



ARMOURGRID SPOTLIGHT JERSEY

SM-2XL, OVERSIZE 3XL, 4XL

| STYLE       | SIZE   | PRICE    |
|-------------|--------|----------|
| UF025JM (M) | SM-2XL | \$385.00 |

- Built with signature, lightweight ArmourGrid ripstop fabric designed to resist rips and tears
- Standard body length = 36"
- 31.5" option available w/ elastic hem (no upcharge)

BASE UNIFORM APPROVED FOR HS PLAY  
OVERSIZE SURCHARGE APPLY // SLEEVE PATCHES +\$14 PER LOCATION

|     |     |     |     |     |     |     |     |
|-----|-----|-----|-----|-----|-----|-----|-----|
| WHT | SLG | GPH | BLK | PUR | MDN | RYL | CBL |
| FGR | TKG | DKO | RED | CRD | MAR | VGD | SGD |

SPOTLIGHT PANT

SM-2XL, OVERSIZE 3XL, 4XL

| STYLE       | SIZE   | PRICE    |
|-------------|--------|----------|
| UF017PM (M) | SM-2XL | \$230.00 |

WITH TACKED IN COMPOSITE BELT\* \$265.00

- 4-way stretch knit fabric with extra power and recovery, mesh gussets for breathability
- Sublimated side panel and knee insets for unique design flexibility

TALL AND OVERSIZE SURCHARGE APPLY  
\*SEE PAGE 6 FOR COMPOSITE BELT DETAILS.  
(This option includes threading of belt through waist, and tacking to the pant)

|     |     |     |     |     |     |     |     |
|-----|-----|-----|-----|-----|-----|-----|-----|
| WHT | SLG | GPH | BLK | PUR | MDN | RYL | CBL |
| FGR | TKG | DKO | RED | CRD | MAR | VGD | SGD |

PINSTRIP NEW DESIGN

FIRST SHIP: 5/25/2019

ARMOUR GRID



SHOULDER DETAIL

SHOWN WITH ARMOURFUSE FOOTBALL PANT (SEE PAGE 22 FOR DETAILS)

ARMOURGRID HIGHLIGHT JERSEY

SM-2XL, OVERSIZE 3XL, 4XL

| STYLE       | SIZE   | PRICE    |
|-------------|--------|----------|
| UF020JM (M) | SM-2XL | \$385.00 |

- Built with signature, lightweight ArmourGrid ripstop fabric designed to resist rips and tears
- Standard stripes and ArmourFuse® prints available
- Standard body length = 36"
- 31.5" option available w/ elastic hem (no upcharge)

BASE UNIFORM APPROVED FOR HS PLAY  
OVERSIZE SURCHARGE APPLY // SLEEVE PATCHES +\$14 PER LOCATION

|     |     |     |     |     |     |     |     |
|-----|-----|-----|-----|-----|-----|-----|-----|
| WHT | SLG | GPH | BLK | PUR | MDN | RYL | CBL |
| FGR | TKG | DKO | RED | CRD | MAR | VGD | SGD |

STRIPES/PRINTS



ARMOUR GRID

NITRO



DISRUPT



ARMOUR GRID

GRID STRIPE



ARMOURGRID HIGHLIGHT JERSEY

SM-2XL, OVERSIZE 3XL, 4XL

| STYLE       | SIZE   | PRICE    |
|-------------|--------|----------|
| UF020JM (M) | SM-2XL | \$375.00 |

- Built with signature, lightweight ArmourGrid ripstop fabric designed to resist rips and tears
- Standard stripes and ArmourFuse® prints available
- Standard body length = 36"
- 31.5" option available w/ elastic hem (no upcharge)

BASE UNIFORM APPROVED FOR HS PLAY  
OVERSIZE SURCHARGE APPLY // SLEEVE PATCHES +\$14 PER LOCATION

| WHT | SLG | GPH | BLK | PUR | MDN | RYL | CBL |
|-----|-----|-----|-----|-----|-----|-----|-----|
| FGR | TKG | DKO | RED | CRD | MAR | VGD | SGD |

SPOTLIGHT PANT

SM-2XL, OVERSIZE 3XL, 4XL

| STYLE       | SIZE   | PRICE    |
|-------------|--------|----------|
| UF017PM (M) | SM-2XL | \$230.00 |

WITH TACKED IN COMPOSITE BELT\* \$265.00

- 4-way stretch knit fabric with extra power and recovery, mesh gussets for breathability
- Sublimated side panel and knee insets for unique design flexibility

TALL AND OVERSIZE SURCHARGE APPLY  
\*(This option includes threading of belt through waist, and tacking to the pant)

| WHT | SLG | GPH | BLK | PUR | MDN | RYL | CBL |
|-----|-----|-----|-----|-----|-----|-----|-----|
| FGR | TKG | DKO | RED | CRD | MAR | VGD | SGD |

COMPOSITE FOOTBALL BELT

XS-5XL

| STYLE      | SIZE   | PRICE   |
|------------|--------|---------|
| UAFBC3 (M) | XS-5XL | \$35.00 |

- Signature 4-way stretch fabric covered 1 1/2" web belt
- Lightweight composite buckle
- Buckle available in Graphite or Black

D-RING BELT ALSO AVAILABLE. UAFBC1 = \$32.00  
AVAILABLE IN SAME COLORS AS SPOTLIGHT PANT

ARMOURGRID HIGHLIGHT JERSEY

SM-2XL, OVERSIZE 3XL, 4XL

| STYLE       | SIZE   | PRICE    |
|-------------|--------|----------|
| UF020JM (M) | SM-2XL | \$375.00 |

- Built with signature, lightweight ArmourGrid ripstop fabric designed to resist rips and tears
- Standard stripes and ArmourFuse® prints available
- Standard body length = 36"
- 31.5" option available w/ elastic hem (no upcharge)

BASE UNIFORM APPROVED FOR HS PLAY  
OVERSIZE SURCHARGE APPLY // SLEEVE PATCHES +\$14 PER LOCATION

| WHT | SLG | GPH | BLK | PUR | MDN | RYL | CBL |
|-----|-----|-----|-----|-----|-----|-----|-----|
| FGR | TKG | DKO | RED | CRD | MAR | VGD | SGD |

ELEVATE PANT

SM-2XL, OVERSIZE 3XL, 4XL

| STYLE       | SIZE   | PRICE    |
|-------------|--------|----------|
| UF022PM (M) | SM-2XL | \$210.00 |

WITH TACKED IN COMPOSITE BELT\* \$245.00

- 4-way stretch knit fabric with extra power and recovery, mesh gussets for breathability
- Sublimated knee insets for unique design looks

TALL AND OVERSIZE SURCHARGE APPLY  
\*SEE PAGE 6 FOR COMPOSITE BELT DETAILS.  
(This option includes threading of belt through waist, and tacking to the pant)

| WHT | SLG | GPH | BLK | PUR | MDN | RYL | CBL |
|-----|-----|-----|-----|-----|-----|-----|-----|
| FGR | TKG | DKO | RED | CRD | MAR | VGD | SGD |

OUTLAW

DYNASTY

ARMOUR GRID



TV NUMBER PLACEMENT ON SHOULDER COWL FOR THIS DESIGN



SLEEVE DETAIL

NEW

ARMOURGRID JERSEY

FIRST SHIP: 5/25/2019 // XS-2XL, OVERSIZE 3XL, 4XL

| STYLE       | DESIGN  | SIZE   | PRICE    |
|-------------|---------|--------|----------|
| UF030JM (M) | OUTLAW  | XS-2XL | \$330.00 |
| UF031JM (M) | DYNASTY | XS-2XL | \$330.00 |

- Lightweight CompFit stretch fabric provides ultimate comfort and durability
- Mesh panels for increased durability
- Features 31.5" body length with elastic hem
- +\$4 upcharge for tall option (+2", with elastic hem)

BASE UNIFORM APPROVED FOR HS PLAY // OVERSIZE SURCHARGE APPLY SLEEVE PATCHES +\$14 PER LOCATION

|     |     |     |     |     |     |     |     |
|-----|-----|-----|-----|-----|-----|-----|-----|
| WHT | SLG | GPH | BLK | PUR | MDN | RYL | CBL |
| FGR | TKG | DKO | RED | CRD | MAR | VGD | SGD |

NEW

CONQUER PANT

FIRST SHIP: 5/25/2019 // SM-2XL, OVERSIZE 3XL, 4XL

| STYLE       | SIZE   | PRICE    |
|-------------|--------|----------|
| UF032PM (M) | SM-2XL | \$200.00 |

- 4-way stretch knit fabric with extra power and recovery, mesh gussets for breathability

TALL AND OVERSIZE SURCHARGE APPLY // HIP PATCHES +\$14 PER LOCATION

|     |     |     |     |     |     |     |     |
|-----|-----|-----|-----|-----|-----|-----|-----|
| WHT | SLG | GPH | BLK | PUR | MDN | RYL | CBL |
| FGR | TKG | DKO | RED | CRD | MAR | VGD | SGD |

VICTORY

NEW DESIGN  
FIRST SHIP: 5/25/2019

DECEPTION

NEW DESIGN  
FIRST SHIP: 5/25/2019

compfit<sub>2</sub>



SLEEVE DETAIL

COMPFIT 2 JERSEY

SM-2XL, OVERSIZE 3XL, 4XL

| STYLE         | DESIGN    | SIZE   | PRICE    |
|---------------|-----------|--------|----------|
| UF028JM/V (M) | VICTORY   | SM-2XL | \$315.00 |
| UF029JM/D (M) | DECEPTION | SM-2XL | \$315.00 |

- Lightweight CompFit stretch fabric provides ultimate comfort and durability
- Mesh panels for increased durability
- Features 31.5" body length with elastic hem
- +\$4 upcharge for tall option (+2", with elastic hem)

BASE UNIFORM APPROVED FOR HS PLAY // OVERSIZE SURCHARGE APPLY SLEEVE PATCHES +\$14 PER LOCATION

|     |     |     |     |     |     |
|-----|-----|-----|-----|-----|-----|
| WHT | GPH | BLK | PUR | MDN | RYL |
| FGR | DKO | RED | CRD | MAR | SGD |

SPOTLIGHT PANT

SM-2XL, OVERSIZE 3XL, 4XL

| STYLE                          | SIZE   | PRICE    |
|--------------------------------|--------|----------|
| UF017PM (M)                    | SM-2XL | \$230.00 |
| WITH TACKED IN COMPOSITE BELT* |        | \$265.00 |

- 4-way stretch knit fabric with extra power and recovery, mesh gussets for breathability
- Sublimated side panel and knee insets for unique design flexibility

TALL AND OVERSIZE SURCHARGE APPLY // HIP PATCHES +\$14 PER LOCATION \*SEE PAGE 6 FOR COMPOSITE BELT DETAILS. (This option includes threading of belt through waist, and tacking to the pant)

|     |     |     |     |     |     |     |     |
|-----|-----|-----|-----|-----|-----|-----|-----|
| WHT | SLG | GPH | BLK | PUR | MDN | RYL | CBL |
| FGR | TKG | DKO | RED | CRD | MAR | VGD | SGD |

**BRUINS**



*compfit<sub>2</sub>*

**IMPULSE**



**PREVALIER**



*compfit*

SHOWN WITH ELEVATE PANT



SHOWN WITH FULL LENGTH DRAWCORD PANT

**COMPFIT 2 JERSEY**

SM-2XL, OVERSIZE 3XL, 4XL

| STYLE       | DESIGN  | SIZE   | PRICE    |
|-------------|---------|--------|----------|
| UF029JM (M) | BRUINS  | SM-2XL | \$315.00 |
| UF028JM (M) | IMPULSE | SM-2XL | \$315.00 |

- Lightweight CompFit stretch fabric provides ultimate comfort and durability
- Mesh panels for increased durability
- Features 31.5" body length with elastic hem
- +\$4 upcharge for tall option (+2", with elastic hem)

BASE UNIFORM APPROVED FOR HS PLAY // OVERSIZE SURCHARGE APPLY  
SLEEVE PATCHES +\$14 PER LOCATION

|     |     |     |     |     |     |
|-----|-----|-----|-----|-----|-----|
| WHT | GPH | BLK | PUR | MDN | RYL |
| FGR | DKO | RED | CRD | MAR | SGD |

**SPOTLIGHT PANT**

SM-2XL, OVERSIZE 3XL, 4XL

| STYLE                          | SIZE   | PRICE    |
|--------------------------------|--------|----------|
| UF017PM (M)                    | SM-2XL | \$230.00 |
| WITH TACKED IN COMPOSITE BELT* |        | \$265.00 |

- 4-way stretch knit fabric with extra power and recovery, mesh gussets for breathability
- Sublimated side panel and knee insets for unique design flexibility

TALL AND OVERSIZE SURCHARGE APPLY // HIP PATCHES +\$14 PER LOCATION  
\*SEE PAGE 6 FOR COMPOSITE BELT DETAILS.  
(This option includes threading of belt through waist, and tacking to the pant)

|     |     |     |     |     |     |     |     |
|-----|-----|-----|-----|-----|-----|-----|-----|
| WHT | SLG | GPH | BLK | PUR | MDN | RYL | CBL |
| FGR | TKG | DKO | RED | CRD | MAR | VGD | SGD |

**PREVALIER JERSEY**

SM-2XL, OVERSIZE 3XL, 4XL

| STYLE       | SIZE   | PRICE    |
|-------------|--------|----------|
| UF026JM (M) | SM-2XL | \$315.00 |

- 4-way stretch knit body fabric with mesh apron for breathability
- Customizable sleeve options include standard stripes, ArmourFuse® prints, or custom sublimated logos (logos +\$14 upcharge, both sleeves included)

BASE UNIFORM APPROVED FOR HS PLAY  
OVERSIZE SURCHARGE APPLY

|     |     |     |     |     |     |     |     |     |     |
|-----|-----|-----|-----|-----|-----|-----|-----|-----|-----|
| WHT | SLG | GPH | BLK | PUR | MDN | RYL | CBL | CTL | FGR |
| TKG | DKO | RED | CRD | MAR | BRN | TXO | VGD | SGD |     |

**ELEVATE PANT**

SM-2XL, OVERSIZE 3XL, 4XL

| STYLE                          | SIZE   | PRICE    |
|--------------------------------|--------|----------|
| UF022PM (M)                    | SM-2XL | \$210.00 |
| WITH TACKED IN COMPOSITE BELT* |        | \$245.00 |

- 4-way stretch knit fabric with extra power and recovery, mesh gussets for breathability
- Sublimated knee insets for unique design looks

TALL AND OVERSIZE SURCHARGE APPLY // HIP PATCHES +\$14 PER LOCATION  
\*SEE PAGE 6 FOR COMPOSITE BELT DETAILS.  
(This option includes threading of belt through waist, and tacking to the pant)

|     |     |     |     |     |     |     |     |
|-----|-----|-----|-----|-----|-----|-----|-----|
| WHT | SLG | GPH | BLK | PUR | MDN | RYL | CBL |
| FGR | TKG | DKO | RED | CRD | MAR | VGD | SGD |

**DRAWCORD PANT**

SM-2XL, OVERSIZE 3XL, 4XL

| STYLE       | SIZE   | PRICE    |
|-------------|--------|----------|
| UF015PM (M) | SM-2XL | \$150.00 |

- Signature 4-way stretch knit fabric
- Lightweight, drawcord waistband construction

OVERSIZE SURCHARGE APPLY // HIP PATCHES +\$14 PER LOCATION

|     |     |     |     |     |     |     |
|-----|-----|-----|-----|-----|-----|-----|
| WHT | SLG | BLK | PUR | MDN | RYL | FGR |
| TKG | DKO | RED | CRD | MAR | SGD |     |

DIABLO

compfit



DIABLO JERSEY

SM-2XL, OVERSIZE 3XL, 4XL

| STYLE       | SIZE   | PRICE    |
|-------------|--------|----------|
| UF021JM (M) | SM-2XL | \$315.00 |

- 4-way stretch knit body fabric with mesh apron for breathability
- Double ply shoulders and sleeves for maximum durability

BASE UNIFORM APPROVED FOR HS PLAY  
OVERSIZE SURCHARGE APPLY

|     |     |     |     |     |     |     |     |     |     |
|-----|-----|-----|-----|-----|-----|-----|-----|-----|-----|
| WHT | SLG | GPH | BLK | PUR | MDN | RYL | CBL | CTL | FGR |
| TKG | DKO | RED | CRD | MAR | BRN | TXO | VGD | SGD |     |



ELEVATE PANT

SM-2XL, OVERSIZE 3XL, 4XL

| STYLE       | SIZE   | PRICE    |
|-------------|--------|----------|
| UF022PM (M) | SM-2XL | \$210.00 |

WITH TACKED IN COMPOSITE BELT\* \$245.00

- 4-way stretch knit fabric with extra power and recovery, mesh gussets for breathability
- Sublimated knee insets for unique design looks

TALL AND OVERSIZE SURCHARGE APPLY // HIP PATCHES +\$14 PER LOCATION  
\*SEE PAGE 6 FOR COMPOSITE BELT DETAILS.  
(This option includes threading of belt through waist, and tacking to the pant)

|     |     |     |     |     |     |     |     |  |
|-----|-----|-----|-----|-----|-----|-----|-----|--|
| WHT | SLG | GPH | BLK | PUR | MDN | RYL | CBL |  |
| FGR | TKG | DKO | RED | CRD | MAR | VGD | SGD |  |

JET STREAM



JET STREAM JERSEY

SM-2XL, OVERSIZE 3XL, 4XL, YXS-YXL

| STYLE       | TWILL       | SIZE    | PRICE    |
|-------------|-------------|---------|----------|
| UF018JM (M) | TWILL       | SM-2XL  | \$290.00 |
|             | SCREENPRINT | SM-2XL  | \$270.00 |
| UF018JY (Y) | TWILL       | YXS-YXL | \$290.00 |
|             | SCREENPRINT | YXS-YXL | \$270.00 |

- 4-way stretch mesh body fabric; stretch dazzle cowl and sleeves
- Customizable sleeve options include Explode design, standard stripes, Armourfuse prints, or custom sublimated logos (logos +\$12.50 upcharge, both sleeves included)

BASE UNIFORM APPROVED FOR HS PLAY // OVERSIZE SURCHARGE APPLY

|     |     |     |     |     |     |     |     |     |
|-----|-----|-----|-----|-----|-----|-----|-----|-----|
| WHT | SLG | GPH | BLK | PUR | MDN | RYL | CBL | FGR |
| TKG | DKO | RED | CRD | MAR | BRN | VGD | SGD |     |



JET STREAM PANT

SM-2XL, OVERSIZE 3XL, 4XL, YSM-YXL

| STYLE       | SIZE    | PRICE    |
|-------------|---------|----------|
| UF019PM (M) | SM-2XL  | \$185.00 |
| UF019PY (Y) | YSM-YXL | \$165.00 |

- 4-way stretch knit fabric
- Sublimated customizable knee insets

TALL AND OVERSIZE SURCHARGE APPLY

|     |     |     |     |     |     |     |     |     |     |
|-----|-----|-----|-----|-----|-----|-----|-----|-----|-----|
| WHT | SLG | GPH | BLK | PUR | MDN | RYL | CBL | CTL | FGR |
| TKG | DKO | RED | CRD | MAR | BRN | TXO | VGD | SGD |     |



**STOCK**

- Unique designs and advanced technology in stock
- Pre-set designs, ready to ship
- Best-in-class stock fabrications for all levels of play

**ARMOURGRID**  
(see pg. 15)



**INSTINCT 2**  
(see pg. 17)



**ARMOUR GRID**



**ARMOURGRID JERSEY COLOR OPTIONS**



**ARMOURGRID EXCLUSIVE SLEEVE PRINTS**  
(1-COLOR ONLY; +\$14, INCLUDES BOTH SLEEVES)



**RAIL**

**SMASHER**

**ARMOURGRID JERSEY**

SM-2XL, OVERSIZE 3XL, 4XL

| STYLE       | SIZE   | PACKAGE* | PRICE    |
|-------------|--------|----------|----------|
| UFJ170M (M) | SM-2XL | BLANK    | \$158.50 |

- Built with signature, lightweight ArmourGrid ripstop fabric designed to resist rips and tears
- Features 31.5" body length with elastic hem

UA RECOMMENDS THAT THIS STYLE BE DECORATED WITH TACKLE TWILL ONLY  
OVERSIZE SURCHARGE APPLY

**FORCE PANT**

SM-2XL, OVERSIZE 3XL, 4XL

| STYLE       | SIZE   | PACKAGE | PRICE    |
|-------------|--------|---------|----------|
| UFP545M (M) | SM-2XL | BLANK   | \$126.50 |

- 4-way stretch knit game pant
- Interior elastic waistband with UA Grippy to hold jersey

OVERSIZE SURCHARGE APPLY  
SEE PAGE 16 FOR FORCE PANT DETAILS



UA VORTEX JERSEY COLOR OPTIONS



FORCE PANT COLOR OPTIONS



UA VORTEX JERSEY

SM-2XL, OVERSIZE 3XL

| STYLE       | SIZE   | PACKAGE | PRICE    |
|-------------|--------|---------|----------|
| UFJ175M (M) | SM-2XL | BLANK   | \$134.50 |

- Compression stretch fabric provides ultimate comfort and durability
- Stretch mesh inserts for increased breathability
- Features 31.5" body length with elastic hem

OVERSIZE SURCHARGE APPLY



FORCE PANT

SM-2XL, OVERSIZE 3XL, 4XL

| STYLE       | SIZE   | PACKAGE | PRICE    |
|-------------|--------|---------|----------|
| UFP545M (M) | SM-2XL | BLANK   | \$126.50 |

- 4-way stretch knit game pant
- Interior elastic waistband with UA Grippy to hold jersey

OVERSIZE SURCHARGE APPLY



INSTINCT JERSEY COLOR OPTIONS



INSTINCT PANT COLOR OPTIONS



**NEW**  
INSTINCT 2 JERSEY

FIRST SHIP: 5/25/2019 // XS-2XL, OVERSIZE 3XL, YSM-YXL

| STYLE       | SIZE    | PACKAGE | PRICE   |
|-------------|---------|---------|---------|
| UFJ185M (M) | SM-2XL  | BLANK   | \$71.50 |
| UFJ185Y (Y) | YSM-YXL | BLANK   | \$63.50 |

- Tricot mesh front and back body with dazzle cowl
- Features 31.5" body length with elastic hem

OVERSIZE SURCHARGE APPLY

INSTINCT PANT

SM-2XL, OVERSIZE 3XL, YSM-YXL

| STYLE       | SIZE    | PACKAGE | PRICE    |
|-------------|---------|---------|----------|
| UFP535 (M)  | SM-2XL  | BLANK   | \$103.00 |
| UFP535Y (Y) | YSM-YXL | BLANK   | \$96.50  |

- 4-way stretch knit fabric
- Interior elastic waistband with UA Grippy to hold jersey

OVERSIZE SURCHARGE APPLY



ENCOUNTER JERSEY COLOR OPTIONS



POWER I PANT COLOR OPTIONS



ENCOUNTER JERSEY

SM-2XL, OVERSIZE 3XL, YSM-YXL

| STYLE       | SIZE    | PACKAGE | PRICE   |
|-------------|---------|---------|---------|
| UFJ165M (M) | SM-2XL  | BLANK   | \$87.00 |
| UFJ165Y (Y) | YSM-YXL | BLANK   | \$79.50 |

- Tricot mesh front and back body with dazzle double ply cowl and set-in sleeves
- 4-way stretch knit side panels

OVERSIZE SURCHARGE APPLY

POWER I PANT

SM-2XL, OVERSIZE 3XL, YSM-YXL

| STYLE       | SIZE    | PACKAGE | PRICE   |
|-------------|---------|---------|---------|
| UFP560M (M) | SM-2XL  | BLANK   | \$79.50 |
| UFP560Y (Y) | YSM-YXL | BLANK   | \$71.50 |

- 4-way stretch knit fabric
- Interior elastic waistband with UA Grippy to hold jersey

OVERSIZE SURCHARGE APPLY

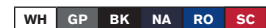
FOOTBALL BELT

SM-2XL, OVERSIZE 3XL-5XL, YSM-YMD

| STYLE       | SIZE    | PRICE   |
|-------------|---------|---------|
| UFP901 (M)  | SM-2XL  | \$19.00 |
| UFP901Y (Y) | YSM-YMD | \$16.00 |

- 4-way stretch fabric covering 1 1/2" web belt
- Reinforced stitching with D-ring construction

OVERSIZE SURCHARGE APPLY



ROLLOUT JERSEY COLOR OPTIONS



INSTINCT PANT COLOR OPTIONS



ROLLOUT JERSEY

SM-2XL, OVERSIZE 3XL, 4XL

LAST SEASON OFFERED

| STYLE       | SIZE   | PACKAGE* | PRICE   |
|-------------|--------|----------|---------|
| UFJ150M (M) | SM-2XL | BLANK    | \$71.50 |

- Belt length jersey with durable mini porthole mesh body fabric
- Stretch knit side inserts for fit and mobility

OVERSIZE SURCHARGE APPLY

INSTINCT PANT

SM-2XL, OVERSIZE 3XL, YSM-YXL

| STYLE       | SIZE    | PACKAGE | PRICE    |
|-------------|---------|---------|----------|
| UFP535 (M)  | SM-2XL  | BLANK   | \$103.00 |
| UFP535Y (Y) | YSM-YXL | BLANK   | \$96.50  |

- 4-way stretch knit fabric
- Interior elastic waistband with UA Grippy to hold jersey

OVERSIZE SURCHARGE APPLY

PIPELINE JERSEY COLOR OPTIONS



BK WH NA SC  
RO DG LG

INTEGRATED PANT COLOR OPTIONS



BK/WH WH/BK GP/WH  
NA/WH SC/WH RO/WH



PIPELINE JERSEY

| STYLE       | SIZE    | PACKAGE* | PRICE   |
|-------------|---------|----------|---------|
| UFJ155M (M) | SM-2XL  | BLANK    | \$40.00 |
| UFJ155Y (Y) | YSM-YXL | BLANK    | \$35.00 |

- Smooth, durable open-hole mesh HeatGear® fabric for the right ventilation
- Elastic binding for snug fit around the arms

OVERSIZE SURCHARGE APPLY

INTEGRATED PANT

| STYLE      | SIZE    | PACKAGE | PRICE   |
|------------|---------|---------|---------|
| UFPP1M (M) | XS-2XL  | BLANK   | \$79.50 |
| UFPP1Y (Y) | YSM-YXL | BLANK   | \$71.50 |

- 4-way stretch knit fabric
- Cutting edge pad placement to allow maximum protection and mobility
- Built in hip, tail, thigh, and knee pads



- Brilliant, vibrant team colors permanently fused directly into textiles
- Limitless customization, all-inclusive pricing with exclusive UA designs and customized prints
- 37 different colors and 16 prints available
- 6 piece minimum order

4-WEEK TURN PROGRAM

- Applies to orders placed 9/1/18 and after
- Build & Submit your order fully online at [underarmourteamuniforms.com](http://underarmourteamuniforms.com)
- No Mock Approvals - 4 weeks starts when you click "Submit"
- Custom Art must be in vector format, and ready for production

FLO (see pg. 22)    WARRIOR (see pg. 22)    STRIPES (see pg. 23)    POWERHOUSE (see pg. 23)    ELEMENT (see pg. 23)



FLO



WARRIOR



STRIPES



POWERHOUSE



ELEMENT



ARMOURFUSE® JERSEY

SM-2XL, OVERSIZE 3XL, 4XL, YSM-YXL

| STYLE      | SIZE    | PRICE    |
|------------|---------|----------|
| UJFJ1M (M) | SM-2XL  | \$141.00 |
| UJFJ1Y (Y) | YSM-YXL | \$127.50 |

- Tricot mesh front and back body, stretch knit side panels, dazzle cowl
- Fully customizable designs
- Vented side hems for better fit and comfort

OVERSIZE SURCHARGE APPLY

ARMOURFUSE® PANT

SM-2XL, OVERSIZE 3XL, 4XL, YSM-YXL

| STYLE      | SIZE    | PRICE    |
|------------|---------|----------|
| UJFP1 (M)  | SM-2XL  | \$154.00 |
| UJFP1Y (Y) | YSM-YXL | \$149.00 |

- 4-way stretch knit fabric
- Customizable pant designs
- Interior elastic waistband with UA Grippy to hold jersey

OVERSIZE SURCHARGE APPLY FOR INTEGRATED PANT, SEE "STOCK" SECTION

ARMOURFUSE® FOOTBALL BELT

SM-2XL, OVERSIZE 3XL-5XL, YSM-YMD

| STYLE       | SIZE    | PRICE   |
|-------------|---------|---------|
| UJFP90 (M)  | SM-2XL  | \$33.50 |
| UJFP90Y (Y) | YSM-YMD | \$31.00 |

- Signature 4-way stretch fabric covering 1 1/2" web belt
- Reinforced stitching for D Rings in UA Pattern

OVERSIZE SURCHARGE APPLY



AVAILABLE IN ARMOURFUSE® COLORS AND PRINTS (see pg. 158-159 for more information)

ARMOURFUSE® JERSEY

SM-2XL, OVERSIZE 3XL, 4XL, YSM-YXL

| STYLE      | SIZE    | PRICE    |
|------------|---------|----------|
| UJFJ1M (M) | SM-2XL  | \$141.00 |
| UJFJ1Y (Y) | YSM-YXL | \$127.50 |

- Tricot mesh front and back body, stretch knit side panels, dazzle cowl
- Fully customizable designs
- Vented side hems for better fit and comfort

OVERSIZE SURCHARGE APPLY

ARMOURFUSE® PANT

SM-2XL, OVERSIZE 3XL, 4XL, YSM-YXL

| STYLE      | SIZE    | PRICE    |
|------------|---------|----------|
| UJFP1 (M)  | SM-2XL  | \$154.00 |
| UJFP1Y (Y) | YSM-YXL | \$149.00 |

- 4-way stretch knit fabric
- Customizable pant designs
- Interior elastic waistband with UA Grippy to hold jersey

OVERSIZE SURCHARGE APPLY FOR INTEGRATED PANT, SEE "STOCK" SECTION

FRENZY REPLIC JERSEY (NOT PICTURED)

SM-2XL, OVERSIZE 3XL, 4XL, YSM-YXL

| STYLE       | SIZE    | PRICE   |
|-------------|---------|---------|
| UJFJRE (M)  | XS-2XL  | \$96.50 |
| UJFJREY (Y) | YSM-YXL | \$90.00 |

- Fully sublimated ArmourFuse® mock mesh v-neck fan jersey
- Available in any UA football jersey design

OVERSIZE SURCHARGE APPLY



7 ON 7 FOOTBALL



UA ECLIPSE **NEW DESIGN**  
FIRST SHIP: 5/25/2019

SEE ARMOURFUSE® TRAINING SECTION (PAGES 46-49) FOR ALTERNATIVE DESIGNS



AF TRAINING TOPS AND SHORTS (SEE PAGE 49 FOR DETAILS)

XS-2XL, OVERSIZE 3XL-4XL, YSM-YXL

| NEW                |         |         |
|--------------------|---------|---------|
| LOOSE SS T         | SIZE    | PRICE   |
| UJGJS1M (M)        | XS-2XL  | \$67.00 |
| UJGJS1Y (Y)        | YSM-YXL | \$60.50 |
| POCKETED SHORT     | SIZE    | PRICE   |
| UJGS2PM (M)        | XS-2XL  | \$74.00 |
| UJGS2PY (Y)        | YSM-YXL | \$67.00 |
| NON-POCKETED SHORT | SIZE    | PRICE   |
| UJGS2M (M)         | XS-2XL  | \$67.00 |
| UJGS2Y (Y)         | YSM-YXL | \$60.50 |

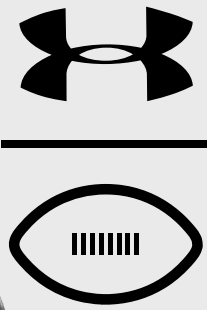
| COMPRESSION SS | SIZE   | PRICE   |
|----------------|--------|---------|
| UJGTBL (M)     | XS-2XL | \$74.00 |
| COMPRESSION LS | SIZE   | PRICE   |
| UJGCLS (M)     | XS-2XL | \$87.50 |

OVERSIZE SURCHARGE APPLY

LIGHT, PROTECTIVE &  
READY for BATTLE.



U A  
G A M E D A Y  
A R M O U R



I WILL.™

**1346850 GAME DAY ARMOUR PRO 5-PAD GIRDLE**

**\$90.00**

**NEW** FIRST SHIP: 5/1/2019

SM-3XL

heatgear POWERED BY: MCDAVID

- Featuring patented McDavid® HEX® technology, the leading protective padding in the game. HEX is lightweight and anatomically contoured, moving freely with your body to provide exceptional protection. The preferred choice for elite athletes around the world.
- Moisture Transport System wicks sweat & dries fast
- HeatGear® with all the benefits of UA Compression, comfortable enough to be worn all day
- Stretch-mesh panels deliver strategic ventilation
- 4-way stretch fabrication allows greater mobility in any direction
- Hard plates add extra impact protection in vulnerable thigh areas
- Hip, thigh, and tail pads included

JERSEY: 82% POLYESTER, 18% SPANDEX; MESH: 90% POLYESTER, 10% SPANDEX  
FOAM: 100% POLYETHYLENE; HARD CAP: 100% ABS

\*Not eligible for Promo



001 BLK

100 WHT

**1346851 GAME DAY ARMOUR PRO 5-PAD TOP**

**\$90.00**

**NEW** FIRST SHIP: 5/1/2019

SM-3XL

heatgear POWERED BY: MCDAVID

- Featuring patented McDavid® HEX® technology, the leading protective padding in the game. HEX is lightweight and anatomically contoured, moving freely with your body to provide exceptional protection. The preferred choice for elite athletes around the world.
- Moisture Transport System wicks sweat & dries fast
- HeatGear® with all the benefits of UA Compression, comfortable enough to be worn all day
- Stretch-mesh panels deliver strategic ventilation
- 4-way stretch fabrication allows greater mobility in any direction
- Rib, spine, and shoulder pads included

JERSEY: 82% POLYESTER, 18% SPANDEX; MESH: 90% POLYESTER, 10% SPANDEX  
FOAM: 100% POLYETHYLENE

\*Not eligible for Promo



001 BLK

**1346854 GAME DAY ARMOUR PRO 5-PAD 3/4 TIGHT**

**\$95.00**

**NEW** FIRST SHIP: 5/1/2019

SM-3XL

heatgear POWERED BY: MCDAVID



001 BLK

100 WHT

BACK VIEW

- Featuring patented McDavid® HEX® technology, the leading protective padding in the game. HEX is lightweight and anatomically contoured, moving freely with your body to provide exceptional protection. The preferred choice for elite athletes around the world.
- Moisture Transport System wicks sweat & dries fast
- HeatGear® with all the benefits of UA Compression, comfortable enough to be worn all day
- Stretch-mesh panels deliver strategic ventilation
- 4-way stretch fabrication allows greater mobility in any direction
- Hard plates add extra impact protection in vulnerable thigh areas
- Hip, thigh, and tail pads included
- 3/4 Length with added compression over knees and calves

JERSEY: 82% POLYESTER, 18% SPANDEX; MESH: 90% POLYESTER, 10% SPANDEX  
FOAM: 100% POLYETHYLENE; HARD CAP: 100% ABS

\*Not eligible for Promo

**1346846 GAME DAY ARMOUR 5-PAD GIRDLE**

**\$80.00**

**NEW** FIRST SHIP: 5/1/2019

SM-2XL

heatgear POWERED BY: MCDAVID

YOUTH: 1346849 // \$75.00 // YMD, YLG

- McDavid® FlexAir padding technology features multi-directional flex channels for exceptional protection with ergonomic range of motion and maximum air flow
- Moisture Transport System wicks sweat & dries fast
- HeatGear® with all the benefits of UA Compression, comfortable enough to be worn all day
- Stretch-mesh panels deliver strategic ventilation
- 4-way stretch fabrication allows greater mobility in any direction
- Hip, thigh, and tail pads included

JERSEY: 82% POLYESTER, 18% SPANDEX; MESH: 90% POLYESTER, 10% SPANDEX  
FOAM: 100% ETHYLENE-VINYLCETATE

YOUTH OFFERED IN ALL COLORS

\*Not eligible for Promo



001 BLK

100 WHT

**1346845 GAME DAY ARMOUR 5-PAD TOP**

**\$75.00**

**NEW** FIRST SHIP: 5/1/2019

SM-2XL

heatgear POWERED BY: MCDAVID

YOUTH: 1346848 // \$70.00 // YMD, YLG

- McDavid® FlexAir padding technology features multi-directional flex channels for exceptional protection with ergonomic range of motion and maximum air flow
- Moisture Transport System wicks sweat & dries fast
- HeatGear® with all the benefits of UA Compression, comfortable enough to be worn all day
- Stretch-mesh panels deliver strategic ventilation
- 4-way stretch fabrication allows greater mobility in any direction
- Rib, spine, and shoulder pads included

JERSEY: 82% POLYESTER, 18% SPANDEX; MESH: 90% POLYESTER, 10% SPANDEX  
FOAM: 100% ETHYLENE-VINYLCETATE

\*Not eligible for Promo



001 BLK

**1346861 GAMEDAY ARMOUR® PRO ELBOW SLEEVE \$40.00**  
**NEW** FIRST SHIP: 5/1/2019 SOLD AS SINGLES // SM-LG

heatgear POWERED BY: MCDAVID

- Featuring patented McDavid® HEX® technology, the leading protective padding in the game. HEX is lightweight and anatomically contoured, moving freely with your body to provide exceptional protection. The preferred choice for elite athletes around the world.
- Moisture Transport System wicks sweat & dries fast
- HeatGear® with all the benefits of UA Compression, comfortable enough to be worn all day

JERSEY: 82% POLYESTER, 18% SPANDEX  
 FOAM: 100% POLYETHYLENE

YOUTH OFFERED IN ALL COLORS

\*Not eligible for Promo



**1346862 GAMEDAY ARMOUR® PRO FOREARM PADS \$35.00**  
**NEW** FIRST SHIP: 5/1/2019 SOLD AS PAIRS // SM-XL

heatgear POWERED BY: MCDAVID

- Featuring patented McDavid® HEX® technology, the leading protective padding in the game. HEX is lightweight and anatomically contoured, moving freely with your body to provide exceptional protection. The preferred choice for elite athletes around the world.
- Moisture Transport System wicks sweat & dries fast
- HeatGear® with all the benefits of UA Compression, comfortable enough to be worn all day

JERSEY: 82% POLYESTER, 18% SPANDEX  
 FOAM: 100% POLYETHYLENE

\*Not eligible for Promo



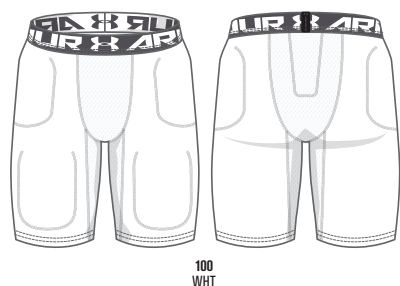
**1305375 FOOTBALL 6 POCKET GIRDLE \$35.00**  
 FIRST SHIP: C/O SM-3XL

heatgear

YOUTH: 1305587 // \$30.00 // YSM-YXL

- HeatGear® fabric, with all the benefits of UA Compression, comfortable enough to be worn all day
- Stretch-mesh panels deliver strategic ventilation
- 4-way stretch fabrication allows greater mobility in any direction
- Moisture Transport System wicks sweat & dries fast
- Anti-odor technology prevents the growth of odor-causing microbes
- 6 pockets for your padding

56% NYLON, 40% POLYESTER, 4% ELASTANE



**1346376 ARMOUR® AIR LIPGUARD – COLOR \$25.00**  
**1346377 ARMOUR® AIR LIPGUARD – CHROME \$30.00**  
**NEW** FIRST SHIP: 5/1/2019 SIZES: OSFM

POWERED BY: SHOCK DOCTOR



SHOCK DOCTOR TECHNOLOGIES

- AirFlow 30mm Breathing channel provides smooth oxygen intake
- Integral bite pads provide a secure fit while providing protection against impact
- Lipguard protects upper and lower lips
- Instant fit-no boil, ready to go out of the package
- Convertible strap gives the option to work with a strap or without
- Works with Braces

100% POLYMER

\*Not eligible for Promo

**1346366 GAMEDAY ARMOUR® MOUTHGUARD \$20.00**  
**NEW** FIRST SHIP: 5/1/2019 SIZES: OSFM

POWERED BY: SHOCK DOCTOR

YOUTH: 1346367 // \$20.00 // OSFM



SHOCK DOCTOR TECHNOLOGIES

- Dual layer design provides advanced protection and fit
- Gel Fit Liner provides a tight, comfortable fit
- Convertible strap gives the option to work with a strap or without
- Easy boil and bite fitting

100% EVA

YOUTH OFFERED IN ALL COLORS

\*Not eligible for Promo

**1346370 GAMEDAY ARMOUR® BRACES – STRAPPED \$22.00**  
**1346927 GAMEDAY ARMOUR® BRACES – STRAPLESS \$22.00**  
**NEW** FIRST SHIP: 5/1/2019 SIZES: OSFM

POWERED BY: SHOCK DOCTOR

YTH STRAPPED: 1346371 // \$22.00 // OSFM

YTH STRAPLESS: 1346928 // \$22.00 // OSFM



SHOCK DOCTOR TECHNOLOGIES

- Specifically designed to conform to upper brace brackets for retention, comfort, and prevention from lacerations
- 100% Medical Grade Silicone adapts to changes in mouth structure as teeth adjust
- Instant fit-no boil, ready to go out of the package
- Strapped or Strapless

100% SILICONE

YOUTH OFFERED IN ALL COLORS

\*Not eligible for Promo